



OUR LOCAL AFRICAN HONEY BEE

In South Africa we have only two species of honey bees and in the summer rainfall areas of our country we deal with *Apis Mellifera Scutellata* (African Honey Bee) or as they say in the movies, "the African killer bee", a species with a notorious reputation for their defensive nature and will readily attack on the slightest disturbance or interference to the nest.



DANGERS IN REMOVING A SWARM OF BEES

Given the fact that an average colony could consist of between 10 000 and 60 000 bees and given their defensive nature as already mentioned, removing such a colony is certainly not a DIY job nor something an inexperienced hobbyist beekeeper should attempt as there is always risk to the client, neighbours and animals and a full scale attack could be fatal.

Even your beekeeper can get stung through the protective clothing, thus it remains a risk and removals and relocations of wild honey bee colonies should be done by a specialist beekeeper who has the training and experience.

NORTHERNS BEEKEEPING ASSOCIATION

can suggest a list of

registered and qualified members

these members of our association are accredited by us as having done the training, have the experience, the right equipment and insurance in the event that something does go terribly wrong and they can assist with the removal of wild and problem honey bee colonies.



For more information in this regard please call

Riekie @ 082 972 1889

or

Marietjie @ 073 278 0261



Fotonet Suite 102

Privatebag X 8

Lynn East

0039

marketing@northernbeekkeeping.co.za

info@northernbeekkeeping.co.za



WHY PAY A BEEKEEPER FOR A BEE REMOVAL?

FIRSTLY, **NOT EVERY BEEKEEPER CAN DO BEE REMOVALS**, IT IS A SPECIALISED AND PROFESSIONAL SERVICE AND IT IS IMPERATIVE THAT YOU **APPOINT A REGISTERED AND QUALIFIED BEEKEEPER.**





Removal and relocation of a large colony from a ceiling.

WHY DO I HAVE TO PAY TO HAVE BEES REMOVED?

The removal of a colony of honey bees may be compared to any other professional home visited service, such as a plumber, electrician, building contractor etc. and will carry a professional service fee.

The service rendered is the contracted removal of a problem, - in this case honey bees. You do pay your plumber, dentist and electrician, right !?

The beekeeper doing the removal and relocation of a wild colony of honey bees is a specialist:

- He / she should be registered with DAFF (Department of Agriculture Forestry and Fisheries).
- Should belong to a local beekeepers association (where he/she is accountable to peers)
- Have done special training to remove and relocate wild honey bee colonies.
- Have third-party insurance.
- Have the appropriate equipment, bee-vacuum etc. to ensure a safe and effective removal.
- The hive to house the bees he / she removes ranges from as much as R800 unassembled to around R1600 assembled depending on who the supplier is.
- He / she has to drive to you at night when all the foraging bees are in the nest and bees are less active - for your safety.

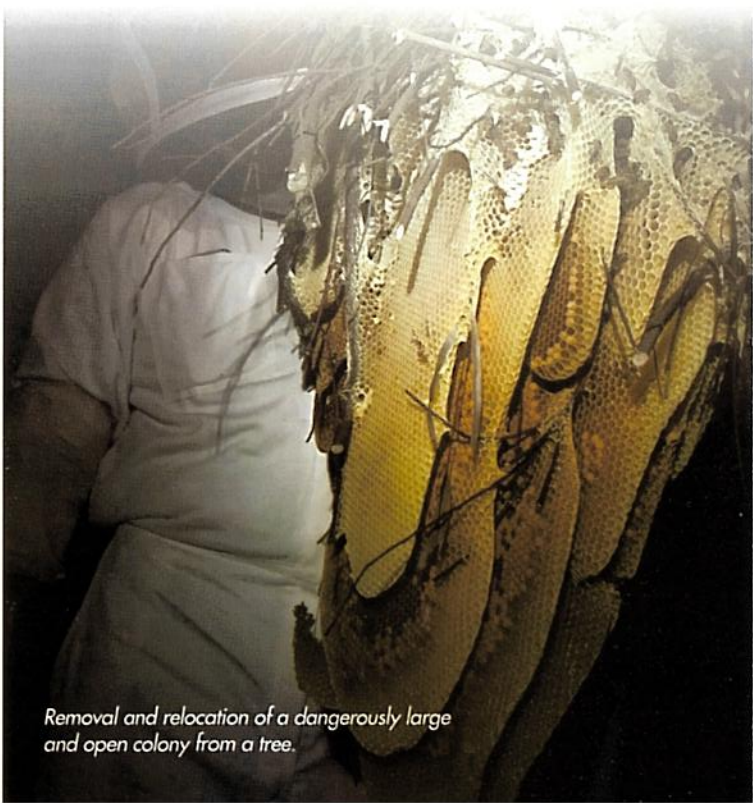
The conclusion thus:

The beekeeper has incurred costs in order to be able to provide a professional service and this assures your peace of mind, knowing that you are in good hands, that your beekeeper is not going to put you, your family, your pets or the neighbors at risk while doing the bee removal.

They have the knowledge, expertise and the confidence to work with dangerous creatures such as the African honey bees and for the love of the bees they are often putting their lives at risk because stings do occur even through protective clothing.



THE POINT IS TO HELP SAVE OUR PRECIOUS BEES, NOT KILL THEM!



Removal and relocation of a dangerously large and open colony from a tree.



Removal and relocation of open colony from a patio window.

ONE OFTEN HEARS , "WELL, I WILL JUST SPRAY AND KILL THEM"!

We highly recommend that you do not attempt your own "bee removal" due to the danger and complexity of the process. An attack by African honey bees could be fatal.

Poisoning bees will be a contravention of Art 36 of 1947 of the law.

"I will just spray and kill them"!

It is possible for an established bee colony to have upward of 50,000 adult bees, plus an additional three times that number of pupae and larvae. Most of the shelf spray products (although NOT registered to kill bees) have the ability to kill a couple thousand adults, leaving the rest of the bees disturbed and very defensive, and this is when you are in danger of being stung, potentially hundreds of times.

"Can I just plug the hole and kill them inside the wall!"

No, this is probably the worst thing you could possibly do! If you plug the entrance hole, the bees will seek out another exit or even worse, find their way into your home through holes in the walls, gaps in outlets or light fixtures.

Never kill a colony in a wall or ceiling, remember that poison only kills the bees and larvae, then the dead larvae rots, excretes fluids and in no time you have maggots, flies, ants, rats and in general, a nasty and sticky mess!